

THE KHIAM VILLAGE-WAR MUSEUM

Khiam, Caza Hasbaya - Marjeyoun
Tel: 07 840028 - 03 221271

The French Forces began the construction of a hospital in 1943 during the French mandate, whereas the English forces continued the construction. This museum was built in an advanced geometric way in order to protect it from enemy attacks.

After the withdrawal of the army, the hospital became completely abandoned.

The rehabilitation began with the launching of the development campaign by the Municipality and Mercy Corps. This project's aim is to reconstruct the hospital and to establish an underground war museum ranked fifth in the world. The museum will display exhibitions related to World War II: a collection of old weapons, military objects, general library. The museum will receive momentary exhibitions for international museums.



Lebanon - Ministry of Tourism

550, Central Bank of Lebanon St., BP: 11/5344, Beirut - Lebanon

Tel: 961-1-340940 - 1 - 2 - 3 - 4, Fax: 961-1-340945 - Hotline: 1735

Web site: www.destinationlebanon.gov.lb

E-Mail: mot@lebanon-tourism.gov.lb

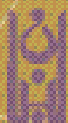
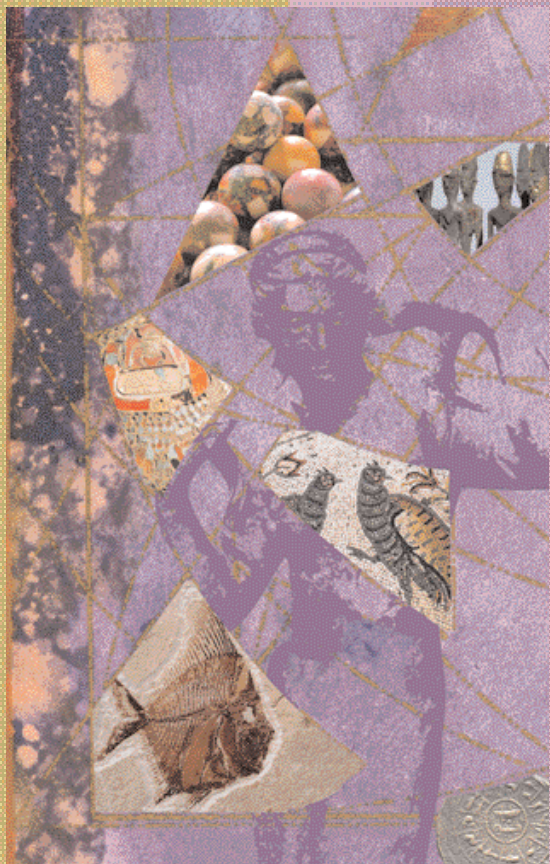
© All rights reserved

Updated by Zeina Haddad

Free Copy

Lebanon

THE MUSEUMS



Lebanon
Ministry
of Tourism



BEIRUT

NATIONAL MUSEUM

Museum's Square

Tel: 01 426703-04

The Boutique: 01 612298

Fax: 01 612259

Website: www.beirutnationalmuseum.com

Opening hours

Tuesday to Sunday: 9:00 a.m. to 5:00 p.m.

Monday: closed

The National Museum's rich collection presents a variety of archaeological finds, (sarcophagi, mosaics, jewelry, coins, ceramic, woodwork, glass, statues...) from archaeological excavations sites all over the country. It covers the Prehistoric Period, the Bronze Age and the Iron Age as well as the Hellenistic, Roman, Byzantine and Arab Conquest to Mamluk periods. The museum offers also an audiovisual room and a gift shop.

AUB ARCHEOLOGICAL MUSEUM

Bliss Street

Tel: 01 340549

Website: <http://ddc.aub.edu.lb/projects/museum/>

E-mail: museum@aub.edu.lb

Opening hours

Monday to Friday: 9:00 a.m. to 5:00 p.m.

Founded in 1868, the American University Museum is one of the oldest museums in the Middle East. It holds an important collection of objects coming from Lebanon and neighboring countries, covering the period from the Early Stone Age to the Islamic era.

LEBANESE PREHISTORY MUSEUM

Saint - Joseph University Street, Achrafieh

Tel: 01 339702

Website: www.usj.edu.lb/mpl

E-mail: mpl@usj.edu.lb

Opening hours

Tuesday, Wednesday, Friday, Saturday:

9:00 a.m. to 3:00 p.m.

The Lebanese Prehistory Museum exhibits artifacts collected since the end of the XIXth century by the Jesuit fathers. The collection relates to the evolution of the prehistoric societies who lived on the Lebanese territory from the Paleolithic to the Chalcolithic.

NICOLAS SURSOCK MUSEUM

Greek Orthodox Archbishop Street, Achrafieh

Tel: 01 201892 - 01334133

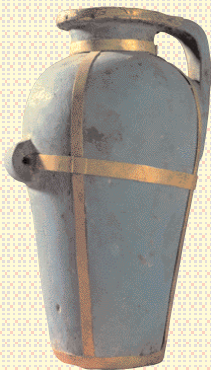
Opening hours

Monday to Saturday: 10:00 a.m. to 1:00 p.m.

and 4:00 p.m. to 7:00 p.m. during expositions.

Sunday: closed

The Sursock Museum is considered as the only modern art museum in Lebanon. Since 1961, about 100 exhibitions, including the Fall Exhibition, have been held displaying the works of both Lebanese and international artists. The permanent exhibition of the museum includes a collection of Islamic art works.



ROBERT MOUAWAD PRIVATE MUSEUM

Zokak el Blat, Army Road

Tel: 01 980970

Fax: 01 976027

Website: www.rmpm.info

E-mail: rmpm@mouawad.com

Opening hours

Tuesday to Sunday: 9:00 a.m. to 5:00 p.m.

Monday: closed

A mixture of Oriental and Occidental cultures, the museum is an Arab palace built in 1891 that hosts Robert Mouawad's collection of books and manuscripts, ceramics, pottery, carpets, icons, Chinese porcelain, jewelry, mosaics, metal and wooden panels.

PLANET DISCOVERY: CHILDREN'S SCIENCE MUSEUM

Omar El Daouk Street, near Starco Center, Downtown

Tel: 01 980650

Website: www.solidere.com

E-mail: planet_discovery@hotmail.com

Opening hours

Monday to Thursday: 9:00 a.m. to 3:00 p.m.

Friday & Saturday: 10:00 a.m. to 7:00 p.m.

Planet Discovery Children's Science Museum is a favored destination for the 3- to 15-year olds children.

Interactive experiments, exhibitions, performances, workshops, and awareness competitions, are a major source of scientific experience.



THE NORTH

THE PERMANENT SCIENTIFIC MUSEUM: ANIMALS, BIRDS AND BUTTERFLIES

St. Doumit monastery, Al Qoubayat, caza Akkar
Visiting hours: please contact the Superior Father
Tel: 06 350004

More than 400 embalmed bird species and animals from Lebanon and 4000 butterflies from all over the world are exposed in this museum.

For scientific information

contact Father Ayoub Yacoub: 03 486354

GIBRAN KHALIL GIBRAN MUSEUM

Bsharreh

Tel: 06 671137

Website: www.khalilgibran.org

E-mail: kgibran@cyberia.net.lb

Opening hours

Monday to Sunday: 10:00 a.m. to 6:00 p.m. (Summer)

Tuesday to Sunday: 9:00 a.m. to 5:00 p.m. (Winter)

Monday: closed (winter)



The Monastery of Mar Sarkis (St. Sergio) in Gibran's native town Bsharreh has been transformed into a Museum in 1975. The contents of Gibran's studio in New York, including his furniture, his personal belongings, his private library, his manuscripts and 440 original paintings are present in the Museum.

Nowadays, the hermitage of the Monastery, an old cave, became Gibran's grave.

ST ANTHONY-THE GREAT MONASTERY'S MUSEUM

Arbet Qozhaya, Caza Besharreh

Tel: 06 995505

Opening hours

Monday to Sunday: 9:00 a.m. to 8:00 p.m. (Summer)

9:00 a.m. to 5:00 p.m. (Winter)

The Museum is located in Qozhaya Valley, one of the ramifications of Qadisha Valley listed as World Heritage site by UNESCO.

The Museum presents the first printing press in the Middle East dating from 1585.

The Exhibition includes religious objects and vestments, in addition to gifts from kings, some clay pots and ancient agricultural tools.

DR. ELIE SARRAF MUSEUM

Lebanon castle, Kousba, Caza Al Koura

Tel: 06 511700

Opening hours

Tuesday to Sunday: 10:00 a.m. to 6:00 p.m.

Monday: closed

The Museum contains around 150 wooden made statues from different trees in many locations in Lebanon and mosaic pieces of classical style handcrafted by Dr. Elie Sarraf.

BASBOUS FAMILY ART & SCULPTURE EXHIBITION

Rachana, Caza Batroun

Tel: 06 720903

E-mail: zeinabasbous@hotmail.com

The museum exposes a big number of sculptures performed by the brothers Basbous and various sculptors

who presented their art works upon their participation in the Annual Symposium.

ST. NEEMET-ALLAH EL HARDINI MUSEUM

Monastery of Sts Cyprian & Justine, Kfifan, Caza Batroun

Tel: 06 720304-5-6

Opening hours

Monday to Sunday: 6:00a.m. to 10:00p.m.

It relates the life of the saint Neemet Allah as a teacher, worker and good example of holiness. A wing is dedicated to Brother Estefan Nehmeh.

SAINT RAFKA MUSEUM

Saint Joseph convent, Jrabta, Caza Batroun

Tel: 06 720402

Fax: 06 720401

Opening hours

Monday to Sunday: 6:00a.m. to 8:00p.m. (Summer)

6:00a.m. to 7:00p.m. (Winter)

The museum exhibits the belongings and the handcrafts of saint Rafqa, as well as the ploughing and weaving tools of the nuns.



MOUNT-LEBANON

BYBLOS SITE MUSEUM

Byblos Citadel

Tel: 09 540001 - Fax: 01 612259

Opening hours

Monday to Sunday: 8:30 a.m. to 7:00 p.m. (Summer)
8:30 a.m. to 4:30 p.m. (Winter)

The Museum offers an overview of the excavations undertaken in the site of Byblos. The history of Byblos, from Prehistory to the Arab and Medieval periods, is illustrated with finds related to these periods as well as thematic panels shedding light on the daily life of its inhabitants.

LOUIS CARDACHI FOUNDATION & MUSEUM

Byblos, medieval quarter

Tel: 09 540310 - 09 541854 - 03 223755

Fax: 09 942860

Website: www.louiscardahi.com

E-mail: fondation@louiscardahi.com

Opening hours

Saturday: 9:00 a.m. to 4:00 p.m.

Other days by appointment.

A cultural and museographic center focusing on the history of Jbeil-Byblos situated in a traditional house to the south of the Cathedral of St. John the Baptist.

BYBLOS FOSSILS MUSEUM

Souk of Byblos

Tel: 09 540001 - Fax: 01 612259

Opening hours

Monday to Sunday: 8:30 a.m. to 7:00 p.m. (Summer)
8:30 a.m. to 4:30 p.m. (Winter)



The Museum exhibits a wide variety of fossils, featuring mainly fish, found in the area of Byblos as well as other Lebanese regions. It contains a number of rare specimens from private collections in addition to the museum's collection.

MEMORY OF TIME

Byblos, Citadel Area

Tel: 09 547083 - 03 742099

Website: www.memoryoftime.com

E-mail: abisaad@memoryoftime.com

Opening hours

Monday to Sunday: 9:00 a.m. to 8:00 p.m.

Our exhibition can go back in time 100 million years with our largest collection of fossils extracted from Haqil, Hgula and Ennamoura, three villages internationally known for their rich quarries of fossils, fish, crustaceans and plants, and for their unique species highly conserved in the world. Visitors are provided with all sort of information related to the studied and exhibited pieces.

WAX MUSEUM

Byblos, Mar Youhanna, Morcos Street

Tel: 09 540463 - 03 395537

E-mail: chawkiah@terra.net.lb

Opening hours

Monday to Sunday: 9:00 a.m. to 6:00 p.m.

The Museum displays wax statues and life scenes from Phoenician Period to modern times.



PEPE ABED MUSEUM

Byblos, old port area

Opening hours

Monday to Sunday: 10:00 a.m. to 6:00 p.m.

Pepe Abed has set up his own museum adjacent to the Fishing Club restaurant, in an 800 years old residence, featuring his personal collection of antiquities. The museum is supervised by UNESCO.

EXPO HAKEL

Hakel Main Road, Caza Byblos

Tel: 09 770012 - 03 708287

Website: www.expohakel.com

E-mail: info@expohakel.com

Opening hours

Monday to Sunday: 8:00 a.m. to 6:00 p.m.



Expo Hakel is the first museum specialized in local fossils. It contains more than 500 specimens on display divided into different species of fishes, rays, plant, crinoid, crustaceans... The majority of these species are extinct. All the fossils were found in Hakel and are around 95 million years old.

ST. MARON MONASTERY MUSEUM

Aannaya, Caza Byblos

Tel: 09 760130-1-2-3-4

Fax: 09 760135

Website: www.saintcharbel-annaya.com

E-mail: info@saintcharbel-annaya.com

Opening hours

Monday to Sunday: 6:30 a.m. to 11:00 p.m. (Summer)
7:00 a.m. to 9:00 p.m. (Winter)

The monastery has a small museum describing the life of Saint Charbel Makhlof. Also exposed are his clothes stained with blood, his many coffins and remains.

OUR LADY OF ILIJÉ MONASTERY

Mayfouq, Byblos Caza

Tel: 09 765506

Fax: 09 765505

Opening hours

Monday to Sunday: 7:30a.m. to 7:00p.m.

The monastery used to be the residence of the Maronite Patriarchat from 1120 to 1440. It preserves the oldest maronite icon dating back to the 10th century.

ST. CHARBEL CHURCH MUSEUM

Maad, Caza Byblos

Tel: 09 750139

The museum is situated in the hall just before the church (the narthex).

It exhibits archaeological finds like capitals and columns bases, tombstones, mosaic fragments, all dating to the roman and early Christian periods.

We can also find the only crusader tomb in Lebanon attributed to a certain Anne Boulanger buried in 1241.

JULIUSZ SLOWACKI MUSEUM

St. Antoine Convent, Ghazir, Caza Kesrouan

Tel: 09 925001 / 09 926951-2-3

Visit by appointment.

A wing of the Saint Antoine Convent, converted into a museum, is dedicated to the memory of the Polish poet Juliusz Slowacki who visited Lebanon during his trip to the Orient where he wrote his famous patriotic poem entitled Anhelli.

OUR LADY OF BZOUUMMAR CONVENT MUSEUM

Bzoummar, Caza Kesrouan

Tel: 09 260811-2-3-4

E-mail: parev@bzoummarvank.org

Visit by appointment.

The convent has a museum that holds valuable Egyptian, Phoenician, and Armenian artifacts. The collection also includes ancient clothes and head-dresses of priests.

THE OLD SOUK MUSEUM

Zouk Mkayel, Caza Kesrouan

Opens only during summer festival.

The museum is located in a craftsman's house in the souk and highlights old crafts.

ELIAS ABOU CHABKEH HOME & MUSEUM

Zouk Mkayel, Caza Kesrouan

The house of the poet Elias Abou Chabkeh holds a museum and a cultural center in the memory of the latter.

MUSEUM OF HOLOGRAPHY

Cable cars departure station, Jounieh, Caza Kesrouan

Tel: 09 852963

E-mail: fadinaufal@yahoo.com

Holography is a technology using lasers to obtain 3D pictures that float in midair. The museum houses a gallery of 100 holograms and a 3D projection room.



HALL OF FAME

Jeita road, Zouk Mosbeh, Caza Kesrouan

Tel: 09 225202 - 303

Opening hours

Monday to Sunday: 9:00 a.m. to 8:00 p.m (Summer)

9:00 a.m. to 6:00 p.m. (Winter)

The Hall of Fame houses 50 silicone statues of world's famous people in the political, artistical and cultural fields, many of the statues sing, talk and move.

LEBANESE HERITAGE MUSEUM

General Secretariat of Catholic churches Bldg,
Mansourieh, Ain Najem, Caza Al-Metn

Tel: 03 850800 - 03 850999

Website: www.lebaneseheritagemuseum.org

E-mail: info@lebaneseheritagemuseum.org

The museum displays items going back to five periods: Phoenician, Hellenistic, Roman, Byzantine and Islamic as well as some pieces from the 19th and 20th centuries. One of the corridors is dedicated to Youssef Bek Karam.

CILICIA MUSEUM

Armenian Catholicosate, Antelias, Caza Al-Metn

Tel: 04 410001

Website: www.cathcil.org

E-mail: cathcil@cathcil.org

Opening hours

Tuesday to Sunday: 8:00 a.m. to 2:00 p.m. (Summer)

10:00 a.m. to 5:00 p.m. (Winter)

Monday: closed

The Museum contains relics and reliquaries, a collection of gold and silver plates from XVIIth to the XIXth centuries, embroideries and liturgical costume, manuscripts, as well as a series of illuminations, miniatures and Khatchkars

(Armenian funerary steles). One of the museum's halls exhibits a collection of modern works of art by Armenian painters and sculptors from Lebanon and the Diaspora.

AMEEN RIHANI MUSEUM

Al-Freykeh, Caza Al-Metn

Tel: 04 926062

Website: www.ameenrihani.org

Among the variety of things present in the museum are Ameen Rihani's English and Arabic writings, his manuscript, letters, art works both personal and friends, personal belongings and bust sculpture, newspaper clippings, and gifts from foreign Leaders.

MICHEL ABOU JAOUDEH MUSEUM

Michel Abou Jaoudeh Bldg, Saideh Street, Zalka,
Caza Al- Metn

Tel: 03 396558

Visit by appointment.

The Museum exhibits personal objects of the journalist, various documents as well as his 10937 articles published in An Nahar newspaper. The museum also includes a public library with more than 3000 political, historical and philosophical books.

DOROTHY SALHAB KAZEMI MUSEUM

Salhab Bldg, Roumieh, Caza Al-Metn

Tel: 04 865419

Visit by appointment.

The Museum presents a collection of about 150 ceramic pieces performed by the artist.

Yousef Ghsoub residence, facing Fanar municipality,
Caza Al-Metn
Tel: 01 891360 - 03 891360
Visit by appointment.

This Art workshop contains more than 75 sculptures of different shapes and a model of Baalbek's temples measuring 6m x 3m.

The Ministry of Culture assigned a yearly financial help to the committee of the Ghsoub Museum for the rehabilitation and maintenance.

NOUR MUSEUM

Télé Lumière Bldg, Dora, Caza Al-Metn

Tel: 01 255500 – 1-2-3-4-5

Opening hours

Tuesday to Sunday: 9:00 a.m. to 6:00 p.m.

Monday: closed

It exhibits a collection of artistic crafts, a variety of currencies, statues, icons, ancient and modern paintings, musical instruments, craft tools and permanent Christmas crib. There is also a possibility for televised conferences and different celebrations.

The aim of the museum is culture, education and religious preaching.

SILK MUSEUM

Old Silk factory, Bsous, Caza Aley

Tel: 01 744222 - 05 940767

Fax: 01 753150

E.mail: amed@terra.net.lb

Opening hours

Tuesday to Sunday: 10:00 a.m. to 6:00 p.m.

(May to September)

Monday: closed

The newly renovated museum has been reopened in 2002. The visitors can learn about the region's history and the artistic technique of silk making.

THE SHOUF CEDAR MUSEUM

Environmental Awareness Center,
Victoria, Ain Zhelta, Caza Shouf
Tel: 05 502230 - 03 682472
Website: www.shoufcedar.org
Opening hours
Monday to Sunday: 9:30 a.m. to 4:00 p.m.

This environmental museum features specimens of the biological diversity living in the Shouf Cedars Reserve such as plants, insects, butterflies and reptiles, as well as an educational display on plants.

BEITEDDINE PALACE MUSEUM

Beiteddine, Caza Shouf
Tel: 05 500077 - Fax: 01 612259
Opening hours
Tuesday to Sunday: 9:00 a.m. to 6:00 p.m.
(between April 1st and October 31)
9:00 a.m. to 4:00 p.m.
(between November 1st and March 31)
Monday: closed

The Museum displays objects from the Phoenician Period to the XIXth c. It includes ceramic, glass, sarcophagi, jewelry and a significant collection of Byzantine mosaics.

MARIE BAZ MUSEUM

Deir El Qamar, Caza Shouf
Tel: 05 511666 - 05 512777 - 03 756000
E-mail: mariebaz@inco.com.lb
Opening hours
Monday to Sunday: 9:00 a.m. to 8:00 p.m. (Summer)
9:00 a.m. to 6:00 p.m. (Winter)

The Museum relates the history of Lebanon since 1512 through 100 wax statues of personalities that have left their mark in history. The Museum is located inside the old Palace of Emir Fakhreddine Maani the 2nd.

MOUSSA CASTLE

Beiteddine, Caza Shouf

Tel: 05 500106 - 03 273750

Fax: 05 501660

Website: www.moussacastle.com.lb

E-mail: moussa@moussacastle.com

Opening hours

Monday to Sunday: 8:00 a.m. to 8:00 p.m. (Summer)

8:00 a.m. to 6:00 p.m. (Winter)

A realized dream (1945-2006) of a single-handed Lebanese artist: Moussa Maamari. A middle-aged like castle and a museum exhibiting hydraulic and mobile statues sampling Lebanese heritage and traditions as well as a unique large collection of weapons.

THE CAVE OF ARTS

Jahliyah, Caza Shouf

Tel: 05 720584 - 03 334595

Website: www.kahefalfounoun.com

Opening hours

Tuesday to Sunday: 10:00 a.m. to 6:00 p.m.

Monday: closed

Made up of old, historic tunnels and gardens that go back to the Ottoman era, the Cave of Arts holds a collection of antique pieces and utensils, wax sculptures, and naturally molded rocks and branches.

The cave also displays a variety of traditional, Lebanese mosaic pieces, poetry canvas and oil paintings representing the traditional Lebanese heritage and Arab true-bread horses.



BEQaa

THE TRADITIONAL LEBANESE HOUSE MUSEUM

Barbara quarter, Zahle

Tel: 08 822170

Visit by appointment.

The museum displays a wide collection of old weapons, roman capitals and columns, Lebanese currencies, photos of Lebanese presidents before and after the independence, rare Persian carpets, colored glass wares and luster, old furniture and a collection of old musical instruments.

TERBOL MUSEUM ECOMUSEUM OF THE BEKAA

Midst of the village, near Ste. Takla church, Terbol, caza Zahle

Tel: 05 455104 - 03 987678

(under the direction of the National Heritage Foundation)

Website: www.fnp.org.lb

E-mail: terbol@fnp.org.lb

Opening hours

Monday to Sunday: 10:00a.m. to 6:00 p.m.

(May to November)

The museum is an old farmhouse belonging to the Rami family. This liwan type house is built from sun-dried bricks coated with clay and marl, then whitewashed. The roof is made of wooden beam covered with reeds and tamped clay. A wide collection of old tools are exposed, formerly used by Lebanese farmers. The poet Nehmeh Saghbini, owner of the majority of the tools, provides information to the visitors.

BALBECK SITE MUSEUM

Baalbeck Citadel

Tel: 08 370520

Fax: 01 612259

Opening hours

Monday to Sunday: 8:30a.m. to 7:00 p.m. (Summer)

8:30a.m. to 4:30p.m. (Winter)

Inaugurated in 1998 to commemorate the 100th anniversary of Emperor Wilhelm II's visit to Baalbeck. The museum displays archaeological finds (statues, mosaics, sarcophagi, ceramic...) in addition to panels related to the history of Baalbeck's site and excavations. The museum shows also some old pictures of the German photographer Herman Burckhardt.

MIRACULOUS LADY MONASTERY MUSEUM

Ras Baalbek, Caza Baalbek

Tel: 08 210484 - 08 210153

Opening hours

Monday to Sunday: 6:00a.m. to 1:00 pm

and 3:00 p.m. to 9:30 p.m. (Summer)

3:00 p.m. to 7:30 p.m. (Winter)

The monastery contains a small museum exhibiting religious objects, old stones and pottery, crosses engraved on stone, agricultural tools and a nice collection of icons.



SOUTH

HISTORY MUSEUM OF SAIDA

Moutran street, Sidon

Tel: 07 720110 - 01 490590

Fax: 01 489124

Website: www.museumsaida.org

E-mail: museedebbane@debbane.com

Opening hours

Monday to Sunday: 9.00 a.m. to 6.00 p.m.

Friday: closed

The Debbané Palace is an 18th century house depicting all the elements of an Arab Ottoman Dar with a main courtyard. It demonstrates a perfect integration of decorative motifs and architecture in the style of the damascus decoration school developed from the mameluk tradition and further enriched with ottoman art.

The Debbané foundation is in the process of restoring the building with the goal of transforming it into a museum exposing the impact of the Ottoman Period on Saida's rich architectural history.

THE PHOENICIAN MUSEUM



Cultural movement in Lebanon, Chawaqir, Tyre

Tel: 07 740874 - 03 803376

E-mail: phenix_museum@hotmail.com

Opeing hours

Monday to Sunday: 9:00 a.m. to 5:00 p.m.

A patrimonial and maritime museum relating the history of ancient Tyre and its relation with the sea.

OUR LADY MONASTERY MUSEUM MACHMOUCHEH

Machmoucheh, Caza Jezzine

Tel: 07 800001 - 07 800544

Fax: 07 800096

Opening hours

Monday to Sunday: 9:00 a.m. to 12:00 noon

3:30 a.m. to 6.00 p.m

The museum exposes a wooden model of the church's cupola, a collection of lanterns and old pots, big jars for oil and grain stocking with a millstone and ploughing tools. The museum displays also occidental ritual clothes, saints relics and a relic from the Cross as well as a collection of manuscripts and old liturgical books. Visitors stop to admire the valuable icon illustrating St. Joseph's agony held by the Virgin Mary and Jesus Christ.

LEBANESE MUSEUM FOR MARINE AND WILDLIFE

City center, Tyre

Shortly second branch in Jeliita

Tel: 07 343016-7 / 03 246317

Website: www.lbmarinlife.piczo.com

E-mail: younesj_2@hotmail.com

Opening hours

Monday to Sunday: 8:00 a.m. to 7:00 p.m.

The Museum displays more than 2000 species among them 35 species of Mediterranean sharks like the Giant Basking Shark (9m, 5 tones), giant dolphin (3.5m 400kg), and species of star fishes, crabs, birds, wild animals, reptiles and giant insects. It includes also 200 kind of shells and 225 kind of fine natural minerals and stones. All these wonderful creatures are collected from the Lebanese shore.

MOUSSA TIBA MUSEUM



Haret Al Salha, Qana, Caza Tyre.

Tel: 07 430149 - 03 568925

Opening hours

Thursday and Sunday: 10:00 a.m. to 6:00 p.m.

The Museum exhibits around 300 of the artist's works painted between 1962 and 2002. It includes also a wide collection of paintings from national and international artists.

SOAP MUSEUM

Haret Audi, el Moutran Street, Sidon

Tel: 07 733353 - 753599

Website: www.fondationaudi.org

E-mail: ilaudi@inco.com.lb

Opening hours

Monday to Sunday: 9.00 a.m. to 6.00 p.m.

Friday: closed

Built in the XVII century, the Audi family residence has been renovated and the traditional old soap factory transformed into a thematic museum of handmade soap and opened to the public in 2000.

This Soap Museum purports to relate the history of soap in the area stretching between Aleppo and Nablus and to show the various stages of its manufacturing and the diversity of its shapes and properties.

